

W/Hole

Rapid Eye

Tech Rider v.1.2 19.09.2019 3 pages

W/hole is a physical theatre/new circus performance. Duration 50 min. A 3,5 m high and 4 m wide, wooden structure, for the artist to hang in, is built as a part of the performance and 25 kg stones and 25 kg washed sand is also a part of the performance. Maximum audience: 300. Performances per day: 2.

Presenter provides:

Stage

- Stage dimensions: minimum 8 m deep x 8 m wide x 4 m high.
- Total Blackout is required
- Black backdrop. 6 m wide.
- Black worn dance carpet or black floor that can tolerate that stones in different sizes will be pushed around and a wooden structure will be moved around on the floor.
- Audience seating with a good view of the whole stage.
- Stage must be clean at arrival
- Industrial vacuum cleaner and two brooms.
- One dressing room with toilet and showers. Three sets of towels.
- 5 liters of bottled stillwater, coffee, fruits and three sandwiches for set up and performances.

Light

- All fixtures, cables, dimmers etc. is provided by the presenter according to the lightplot.
- All fixtures and backdrop should be rigged according to lightplot before our arrival.
- All fixtures should be separated. We want access to control the audience lights at the venue.
- Hazer
- 2 DMX outputs (3 or 5 pol) to dimmer and hazer.
- The performance is run by Rapid Eye's tour technician from our own computer.

Audio

- Sound mixer with one input from computer and two outputs.
- Good Quality PA system with top and sub.
- 1 monitor on stage
- Sound is run by Rapid Eye's tour technician from our own computer

Video

- The presenter provides a video projector of min 5000 ANSI/lumen, that must cover the stage area, and one shutter
- Video projector, shutter and cables (vga) should be rigged according to lightplot before our arrival.

Schedule and Crew

- 3 weeks before show, please confirm that all our requirements can be met by contacting stefan@tarabini.dk
- Rapid Eye gets in 8 hours before show.
- Floor cleaning 45 min pre show,
- 2 hours for takedown
- The presenter provides one (stage/light/sound/video) technician with good knowledge of the theatre from get in to get out.

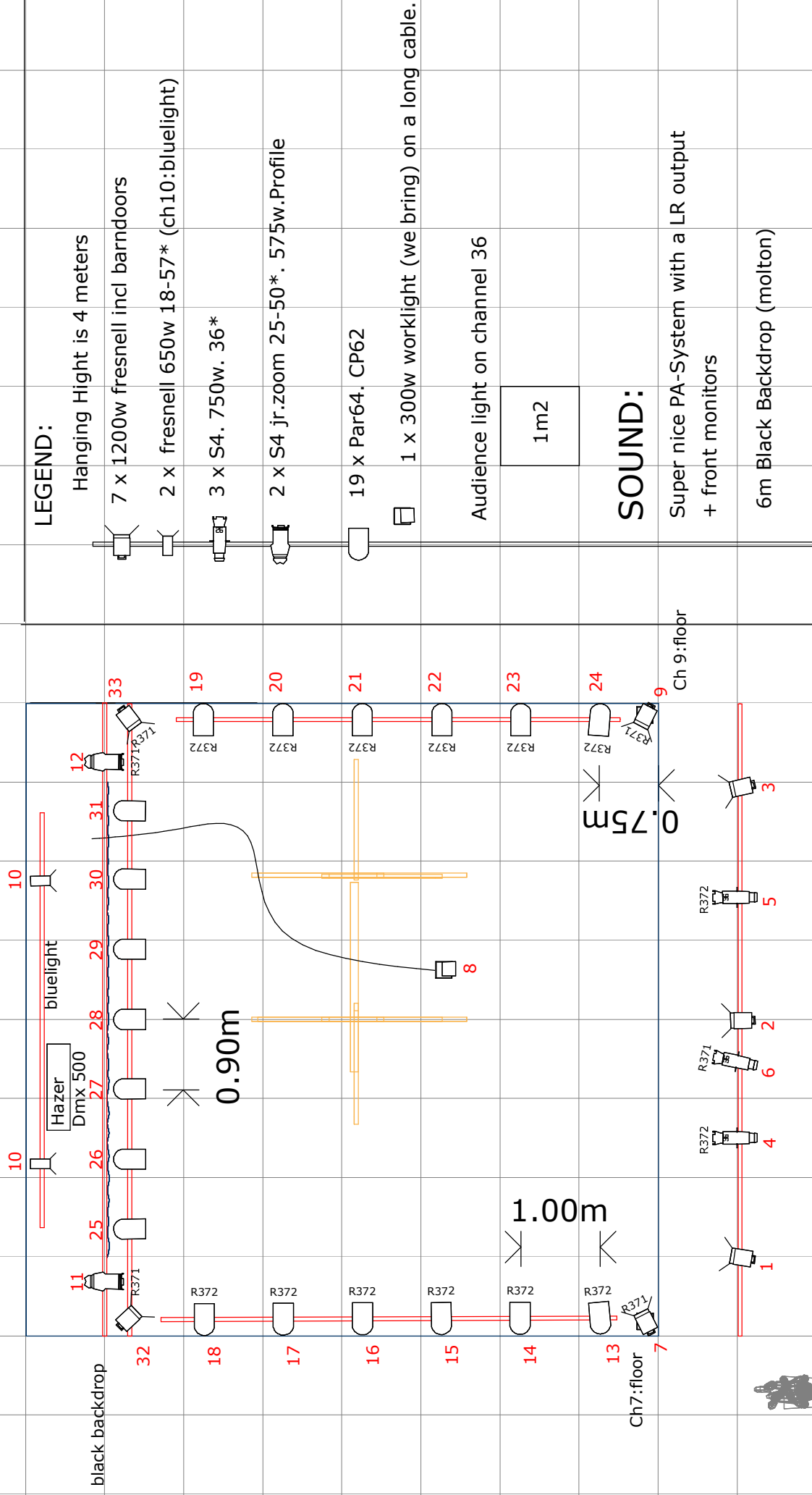
Contact

Technical questions:

Stefan Tarabini
+45 53 62 98 16
stefan@tarabini.dk

Company questions:

Samuel Gustavsson
+45 27 34 08 00
info@rapideye.dk



8 meters from front stage. projector. top hanged. shutter add100.

projektor 